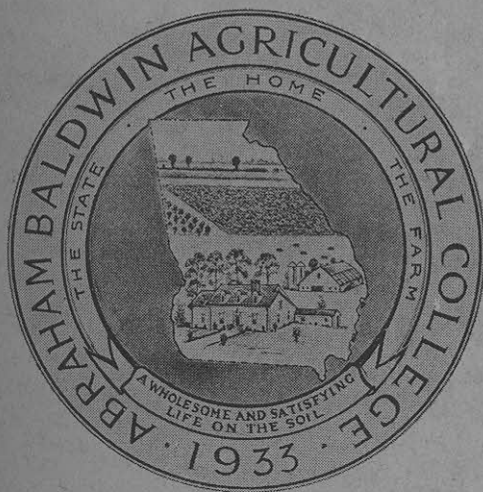


UNIVERSITY SYSTEM OF GEORGIA

BULLETIN

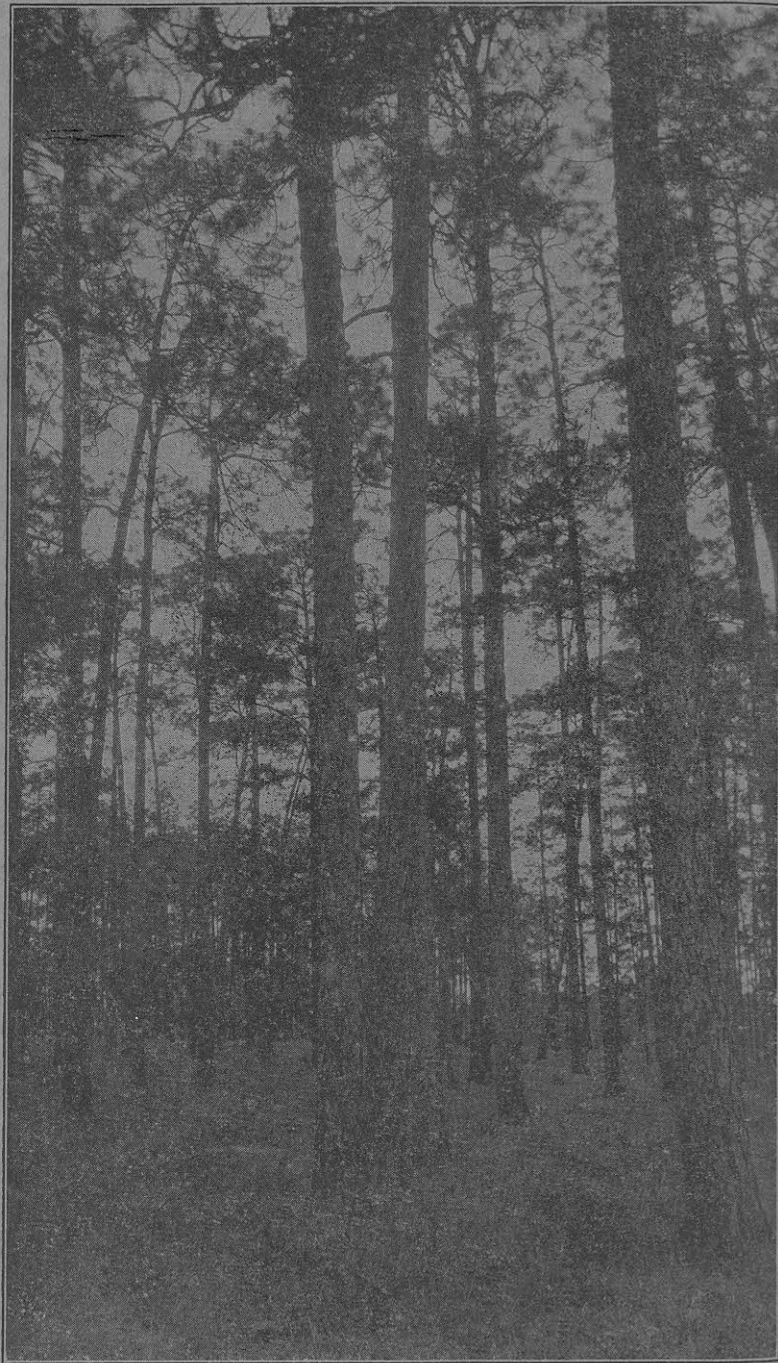
Abraham Baldwin  
Agricultural College



ANNOUNCEMENTS FOR 1935-36 SESSION

---

Opening Date: September 19, 1935



## ABRAHAM BALDWIN AGRICULTURAL COLLEGE

### LOCATION

Abraham Baldwin Agricultural College is located at Tifton, Tift County, in the southern part of Georgia. It is on State Highway Number 7, 100 miles south of Macon and 60 miles north of the Florida line.

Tifton is a beautiful little city with a population of approximately 5,000, located in the heart of one of the best farming sections of the South. Its beautiful homes, splendid churches and hospitable citizens make Tifton an exceptionally wholesome and attractive place in which to live.



The College is a favorite meeting place for South Georgia farmers.

### AN AGRICULTURAL SETTING

Five major agencies for the promotion of agriculture are located at Tifton. In addition to the College is the Coastal Plain Experiment Station; South Georgia headquarters for Extension; South Georgia headquarters for Agricultural Education; and

headquarters for District 1 of the Rural Rehabilitation Division of the F.E.R.A.

### HISTORICAL STATEMENT

Abraham Baldwin Agricultural College was created by the Board of Regents of the University System of Georgia in 1933, and it opened its doors to students for the first time September 11, 1933. The first year, 99 young men and women enrolled in the courses in Agriculture and Home-Making. The second year, 188 students from 70 counties and six states enrolled.

### OBJECTIVES

The major objective as set forth at the founding of the College is "to prepare students for a wholesome and satisfying life on the soil in Georgia." In order to achieve this major objective the College feels that its students should, upon leaving Abraham Baldwin, have the ability; first, to establish and manage a farm business effectively; second, to establish and maintain a satisfactory farm home, and third, to participate in the worthy activities of life, common to the various vocations.

All of the work in the College is planned to train its students so that, upon their graduation and return to their home communities, they may assist in developing these communities because of the training received. While the College is maintained for the primary purpose of preparing young men and women for life on the farm, if at the end of two years a student desires to continue in college he or she may enter the other branches of the University System of Georgia, teaching agriculture or home economics, without loss of time or credit.

### FACILITIES FOR TEACHING

The facilities for teaching agriculture at Abraham Baldwin Agricultural College are unsurpassed in the state. Adjoining the College is the Georgia Coastal Plain Experiment Station. Here the students study first hand the experiments being car-

ried on with the various crops and animals. In addition to the experimental plats of the Station, there is a 1,000 acre farm on which is grown all crops adapted to south Georgia. There is also a well equipped dairy, a large poultry flock, splendid herds of beef cattle and pure-bred hogs—all used in practical instruction.

In addition to the facilities for practical instruction in agriculture, the College library contains approximately 10,000 volumes on agriculture as well as other subjects. There are also



Experimental plots are available for student study.

over 25,000 bulletins on all enterprises from practically every experiment station in the United States. A trained librarian is in charge to assist students in learning the use of the library.

### PHYSICAL EQUIPMENT

There are two fully equipped dormitories, a large administration building, a dining hall, an amphitheater, a farm shop, a gymnasium, an athletic field, and barns for housing the livestock and poultry of the college.



## CAMPUS

The 50 acre campus of the College is unequalled for natural beauty in the state. Magnolias, palmettos, and shrubbery grow in profusion against a background of long leaf pines, making the entire campus a scene of beauty not easily forgotten.



Administration Building.

## EXPENSES

Since the college is operated on a quarter (12 weeks) basis, a summary is given on the next page of the expenses for one quarter.

## SUMMARY OF EXPENSES FOR ONE QUARTER

BOARDING STUDENTS	DAY STUDENTS
1. Fees ..... \$15.00	1. Fees ..... \$15.00
2. Room rent ..... 9.00	2. Noon meal ..... 5.00
3. Table board ..... 36.00	3. Books and Supplies ..... 5.00
4. Books and Supplies ..... 5.00	(Estimated) _____
(Estimated)	
5. Laundry ..... 3.00	
(Estimated)	
Total expenses ..... \$68.00	Total expenses ..... \$35.00

1. Fees are required to be paid quarterly in advance.
2. Room and board are payable monthly in advance.
3. All checks should be made payable to Abraham Baldwin Agricultural College.
4. Students furnish their own bed covering, pillows, towels, and personal articles. Rooms are equipped with beds, dressers, tables, chairs, heat, and light.
5. A room reservation fee of \$3.00 is charged. This is credited on expenses of first month. Due to limited dormitory facilities early application should be made.

## STUDENT WORK

The College employs a limited number of students to assist in the library, as janitors, as dining hall and kitchen helpers, on the campus, garden, farm, and with the poultry. The Coastal Plain Experiment Station furnishes employment to several in the dairy and its experimental projects.

The College is anxious to attract and encourage self-supporting students in every possible way. As a matter of business, though, it can afford to employ only efficient help and to pay the customary wages. If a student desires an education and is

willing to work for it, as a rule, the wise way is to go to college after having saved a sufficient amount to meet expenses for four or five months. Then let the first job found be seized and done in such a way that the services will be regarded as valuable. If this is continued, there is every reason to expect that after the merit of the pupil is known, all the work desired can be had.

While students are warned not to depend upon work to meet their expenses, many, during the last year, have found profitable employment at the College and at the Coastal Plain Experiment Station. About 50 per cent of our students are reducing expenses by work.

### FARM SUPPLIES

Farm supplies, such as syrup, meats, and vegetables will be accepted in payment for board.



Entrance to Fulwood Park, one of the many beautiful sights in Tifton.

## OUTLINE OF COURSES FOR STUDENTS IN AGRICULTURE

### FIRST YEAR

FALL, WINTER and SPRING  
QUARTERS

Farm Management  
Animal Production  
Crop Production  
Forestry  
Farm Mechanics  
Mathematics of the Farm  
Botany  
Biology  
Social Science  
English

### SECOND YEAR

FALL, WINTER and SUMMER  
QUARTERS

Farm Management  
Social Science  
English  
Chemistry  
Physics  
Home Beautification

### Electives—

(At least one agricultural elective must be taken each quarter.)

Beef Cattle  
Dairy Cattle  
Poultry  
Swine  
Forestry  
Farm Mechanics  
Cotton  
Tobacco  
Soils and Fertilizers  
Feed Crops  
Minor Cash Crops  
English  
Social Science  
Fruits and Vegetables

NOTE: When as many as six second year students desire a special course on a particular enterprise in any quarter, it will be given.

Students may enter at the beginning of any quarter. Quarters begin Sept. 19, 1935; Jan. 1, 1936 and March 23, 1936.

## OUTLINE OF COURSES FOR STUDENTS IN HOME MAKING

### FIRST YEAR

Home Management  
Family Clothing  
Foods for Family  
Home Mechanics  
Mathematics of the Home  
Botany  
Biology  
Chemistry of the Home  
Social Science  
English

### SECOND YEAR

Child Care  
Home Beautification  
Physics  
Physical Education  
Nutrition  
  
Electives—  
(At least one Home Making subject must be taken each quarter.)  
  
Household Equipment  
Home Nursing  
Family Relationship  
Family Clothing  
Interior Decorating  
Dairy Products  
Management  
Canning  
English  
Social Science

NOTE: Young women in second year may elect such agricultural subjects as are of interest as Poultry, Floriculture, et cetera.

Students may enter at the beginning of any quarter. Quarters begin Sept. 19, 1935; Jan. 1, 1936 and March 23, 1936.

### DESCRIPTION OF COURSES

All courses offered are planned with the aim of the college in mind.

### AGRICULTURE

The agricultural courses are thoroughly practical and are taught with the farms of the students as a basis. A farm management survey is made of each student's farm and a student

is able to make direct application of the things learned to the practices on his home farm.

### FORESTRY

Since Forestry is such an important enterprise on most south Georgia farms special attention is given to this phase of agriculture. Students are given training that will enable them to manage the forests efficiently. Located in the midst of the



A stand of slash pine near the campus. Forestry as a farm enterprise is stressed.

great naval stores industry of Georgia students are given practical training in this industry. While our training is directed toward the utilization of the farm forests, our students are in demand for non-technical positions in the forest service.

### FARM MECHANICS

The student at Abraham Baldwin Agricultural College receives training in the engineering jobs occurring on most Georgia



farms. Terracing, concrete work, farm shop work, and carpentry are some of the jobs stressed.

### HOME MAKING

The Home Making courses are such that a mastery of them will enable the students to establish and maintain an efficient home. The courses are made effective through the use of a fully equipped home unit for practice.

### SCIENCE

The Science courses are offered from two viewpoints. First, science is taught with the idea in mind that there are certain principles of science that everyone should know regardless of vocation. Second, science is taught from the standpoint of its application to agriculture and also to home making.

### ARTS

English and Social Science are taught with the same two viewpoints in mind. Not only are the parts of English and Social Science taught that should be the common property of all citizens but rural life is stressed in each of these courses.

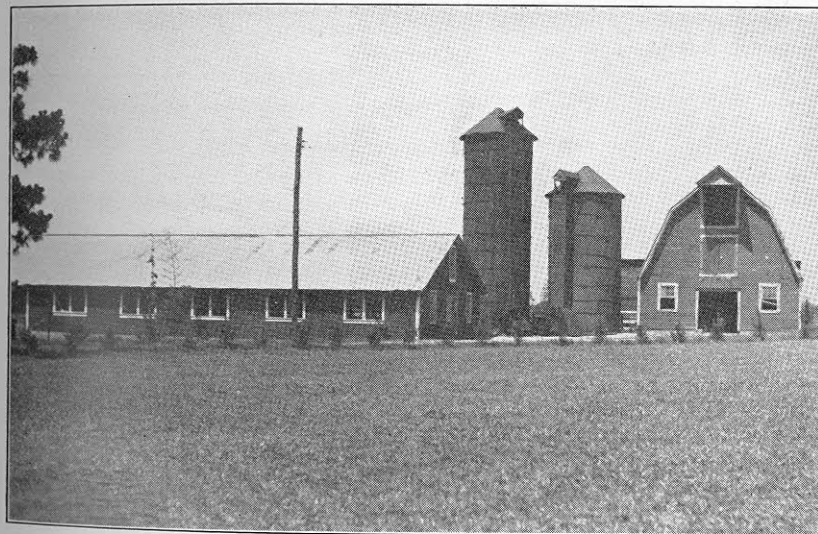
### SPECIAL INSTRUCTIONAL FEATURES

1. Practical training. Each student is given a list of skills in which he must reach a desired level of efficiency. These skills are based on the jobs occurring on a well managed farm. The College farm and the Experiment Station farm offer their facilities for the acquiring of these skills.

2. Coordination of Courses. All courses taught are built around Agriculture and Home Making. Science and mathematics are so coordinated that they have direct application of the subject matter being presented in Agriculture or Home Making. Special effort is made in Social Science to present the problems of rural Georgia. In English, rural life and rural lit-

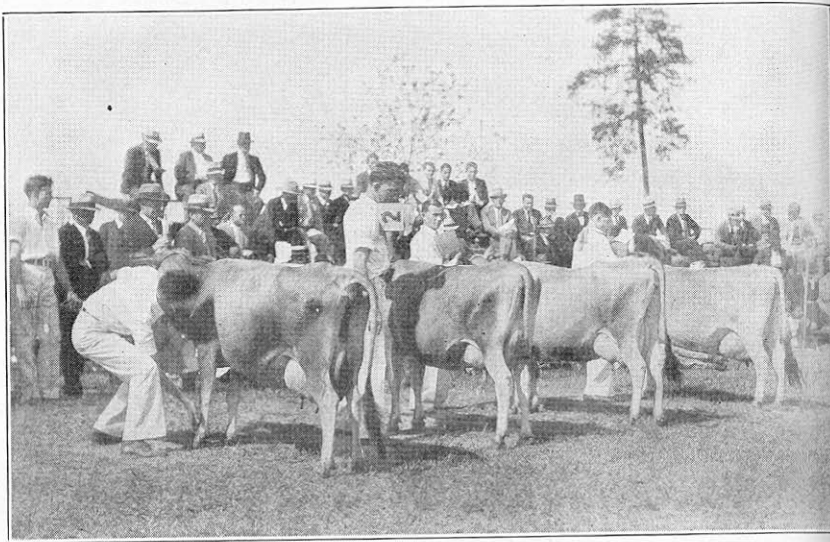
erature are given special emphasis. In all courses glorification of rural life and the importance of Agriculture in the life of the nation are held paramount.

3. Individual instruction. On account of the varied interests and abilities of the students, special attention is given each student. Each course taught has conference periods as well as recitation periods, and it is during the conferences that individual weaknesses are discovered and corrected. It may be said that at Abraham Baldwin the courses are individual courses built around the needs and interests of the individual students.



Boys receive practical training in dairying at the College Dairy.

4. Apprentice training. Arrangements are made so that students who wish to give special study to a particular enterprise may spend three months of the year on the farm of a man who has been successful in that particular enterprise. In addition, students, who have had little or no practical experience, are placed on the farms of some of the most successful farmers in the state.



Students showing class of Jersey cows on Livestock Day.

### SUMMER SCHOOL

In addition to the regular courses that are given in the summer to second year students, new students and students employed upon the campus or farm will be given opportunity to take such courses as they wish. A feature of the summer program is the camps for boys and the camps for girls that are held on the campus.

### SPECIAL STUDENTS

To be a regular student of Abraham Baldwin Agricultural College it is necessary that a student have his high school diploma. However, a student of mature years, upon examination by the faculty and upon the recommendation by his or her county agent, home demonstration agent, or vocational teacher, may be admitted as a special student and allowed to take the courses warranted by his or her ability.

## EXTRA-CLASS ACTIVITIES

### LITERARY

1. **Agricultural Club:** The Agricultural Club is the major literary student activity at the College. This club is divided into four minor clubs. These are:

a. **The Future Farm Club:** This organization is made up of those students who have belonged to a Future Farm chapter in high school.



A champion being shown by one of the students. A study of beef cattle is given particular attention.

b. **The 4-H Club:** This club is composed of young men and young women who have belonged to 4-H Clubs before coming to college.

c. **The Country Gentleman Club:** This is an organization for young men who have had no previous training in agriculture.



d. **Future Farmerettes Club:** Young women in the College are eligible to membership in this organization.

2. **Debating Club.** Students have an opportunity to and are urged to develop skill in debating. Debates are handled by the Director of Extra-Class Activities through a Debating Council. Approximately five inter-collegiate debates are held yearly.

3. **The Dramatic Club.** Since dramatics play such an important part in life, dramatics engage part of the student's time in his extra-class work. The Baldwin Players present major plays throughout the year for the general public in addition to short skits and plays produced for the pleasure of the students.

### MUSICAL

1. **The Glee Club.** Musical talent abounds among the boys and girls of rural Georgia and the Glee Club gives every student a chance to participate.

2. **The Orchestra.** During the first year of the College, students formed an orchestra. New students are urged to bring their musical instruments. In addition to the students' instruments the College owns a large collection of band and orchestra instruments. The orchestra is conducted by a skilled orchestra leader.

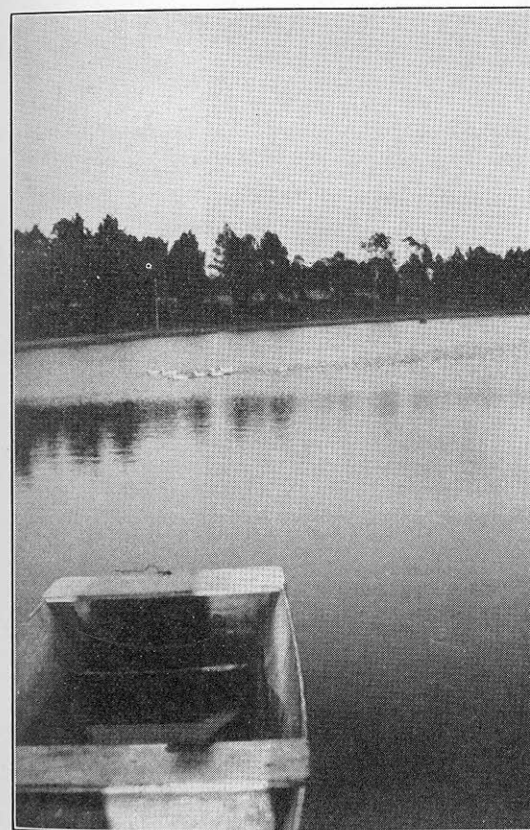
### RELIGIOUS

1. **Vespers.** The religious life on the campus is conducive to the building of character. Vespers are held each Sunday evening and students attend the young people's religious organizations of their choice. The most active of these organizations are the Epworth League and the B. Y. P. U.

2. **Church Attendance.** The religious life of the student is also enriched by cooperation of the Tifton churches in providing transportation for students into Sunday school and church.

### RECREATIONAL

1. **Group.** Students are required to take part in physical recreation that is conducive to bodily development and the spirit of good fellowship. A short time is set aside each day for group play and games.



Lake Lewis, a favorite campus spot.

2. **Special.** One of the most beautiful recreational fields in the state has just been completed. Young men may participate in football, handball, basketball, track and tennis, and other

games of their choice. Girls may participate in softball, basketball, volley ball, tennis, and other games of their choice. The recreational program is carried on under the direction of a skilled recreational director. While special emphasis is given to intra-mural sports, inter-collegiate games are played in football, basketball, and baseball.

3. **Outings.** Occasional outings and picnics are held by the students either on the campus, which has many beautiful picnic sites, or on some stream or lake near Tifton.



A tobacco demonstration held at the Coastal Plain Experiment Station.

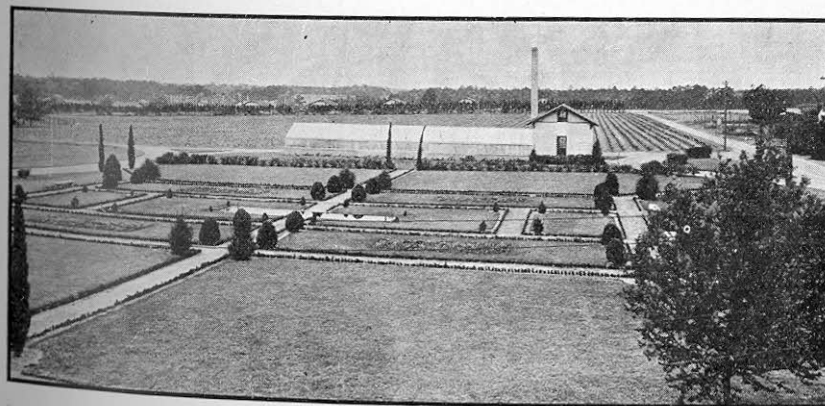
### SPECIAL FEATURES

1. **A Selected Student Body.** It is presumed that young men and women, who anticipate attending college, have already decided upon their life work in a general way, and are thus capable of selecting an educational institution that best fits their needs. A selection of the institution on the part of students and a selection of students on the part of the institution are necessary if the college and graduates are a mutual credit to one

another. We select our students carefully. Only those who express an inherent desire to learn the science and practice of farming or home making are encouraged to enroll. The County Agents, Home Demonstration Agents, County School Superintendents, Vocational Agricultural Teachers, and Teachers of Home Economics aid us greatly in selecting students.

2. **Placement.** If there are facilities at home that offer opportunities for getting into the business of farming, the students will be assisted in locating there. On the other hand, if there are no opportunities at home, a study of available situations will be made. Possibilities of renting, purchasing, and renting with the privilege of purchasing or managing will be investigated.

In cooperation with the Extension Service the institution also accepts responsibility for following its graduates who go into the farming business. Each graduate will be given help in perfecting his farm organization and will be assisted in getting any further technical information desired for carrying through his plans.



A formal garden at the Coastal Plain Experiment Station.

## THOUGHTS ABOUT FARMING

"The great rural interests are human interests and good crops are of little value unless they open the door to a good kind of life on the farm."

—Theodore Roosevelt

"Give fools their gold and knaves their power,  
Let fortune's bubbles rise and fall,  
Who sows a field, or trains a flower,  
Or plants a tree is more than all."

—Whittier

"He who owns the soil, owns up to the sky."

—Juvenal

"An Agricultural life is one eminently calculated for human happiness and human virtue."

—Josiah Quincy

"Let the farmer forevermore be honored in his calling; for they who labor in the earth are the chosen people of God."

—Thomas Jefferson

"The first farmer was the first man, and all historic nobility rests on possession and use of land."

—Emerson

"If we estimate dignity by immediate usefulness, agriculture is undoubtedly the first and noblest science."

—Dr. Johnson

"Trade increases the wealth and glory of a country; but its real strength and stamina are to be looked for among the cultivators of the land."

—Lord Chatham



# STUDENTS ENROLLED AT ABRAHAM BALDWIN AGRICULTURAL COLLEGE FOR 1934-1935

NAME	COUNTY	ADDRESS
Aaron, R. C.	Bulloch	Garfield, Ga.
Adams, Eugene	Colquitt	Norman Park, Ga.
Adkins, Maxie	Dooley	Vienna, Ga.
Akins, J. I.	Bulloch	Register, Ga.
Alston, J. W.	Webster	Preston, Ga.
Aultman, O. W.	Decatur	Bainbridge, Ga.
Bender, Evelyn	Laurens	Montrose, Ga.
Bennett, James	Wayne	Gardi, Ga.
Bethea, Ethel	Early	Blakely, Ga.
Black, Sue Nell	Tattnall	Glennville, Ga.
Blount, Wilbur	Toombs	Vidalia, Ga.
Blount, Walter	Toombs	Vidalia, Ga.
Booth, Hugh	Taylor	Butler, Ga.
Branch Hugh		Homestead, Fla.
Braswell, Nina	Emanuel	Norristown, Ga.
Brigham, James	Burke	Girard, Ga.
Britt, Mary	Worth	Warwick, Ga.
Brogdon, Eugene	Lanier	Stockton, Ga.
Brown, Helen	Worth	Sylvester, Ga.
Brown, James	Towns	Presley, Ga.
Bruschke, Helen	Charlton	Homeland, Ga.
Bryan, Grace	Tift	Tifton, Ga.
Burnett, Robert	Spalding	Griffin, Ga.
Butler, Bonita	Grady	Cairo, Ga.
Cannon, Earl	Wilcox	Abbeville, Ga.
Carson, Joseph	Tift	Tifton, Ga.
Claxton, M. B.	Johnson	Kite, Ga.
Clements, William	Berrien	Ray City, Ga.
Cochran, A. B.	Burke	Girard, Ga.
Cochran, C. P.	Gordon	Calhoun, Ga.
Colson, Wilton	Charlton	Folkston, Ga.
Cook, Edith	Telfair	Milan, Ga.
Cooper, Ira	Jones	Haddock, Ga.
Cranford, Grace	Dodge	Eastman, Ga.
Davis, Mark	Emanuel	Blun, Ga.
Davis, Woodrow	Jenkins	Millen, Ga.
Dixon, Ralph	Burke	Girard, Ga.
Doster, Norman	Wilcox	Rochelle, Ga.
Driggers, Dan	Bulloch	Brooklet, Ga.
Duke, Sara	Spalding	Griffin, Ga.
DuPree, Byrom	Coffee	Nicholls, Ga.
Eason, J. W.	Tift	Tifton, Ga.
Edge, Owen	Muscogee	Columbus, Ga.
Elliott, Raymond	Spalding	Griffin, Ga.
Etheredge, Kittyly	Baker	Milford, Ga.

NAME	COUNTY	ADDRESS
Eunice, G. B.	Liberty	Hinesville, Ga.
Eve, Robert	Tift	Tifton, Ga.
Fields, W. T.	Turner	Ashburn, Ga.
Findley, W. J.	Toombs	Lyons, Ga.
Findley, Willie Mae	Toombs	Lyons, Ga.
Fletcher, Virginia	Tift	Tifton, Ga.
Fletcher, Sara	Tift	Tifton, Ga.
Frank, Eugene		Norwich, Conn.
Frazier, Samuel	Whitfield	Cohutta, Ga.
Freeman, Fred	Wheeler	Glenwood, Ga.
Fry, Wade	Habersham	Clarksville, Ga.
Fulmer, Frank	Toombs	Vidalia, Ga.
Fuqua, B. F.	Butts	Jackson, Ga.
Fuqua, A. A.	Butts	Jackson, Ga.
Gaskins, Warren	Atkinson	Willacoochee, Ga.
Gaskins, Burnell	Atkinson	Willacoochee, Ga.
Gibson, L. A.		Durham, N. C.
Gillespie, James	Franklin	Carnesville, Ga.
Gillis, Carl	Emanuel	Adrian, Ga.
Gleaton, Hugh	Worth	Warwick, Ga.
Goolsby, Ruth	Appling	Baxley, Ga.
Graham, Charles	Irwin	Ocilla, Ga.
Hamilton, Phillip	Wilcox	Rochelle, Ga.
Hammond, Frank	Gordon	Plainville, Ga.
Hancock, Albert	Turner	Ashburn, Ga.
Hatcher, Frances	Crisp	Cordele, Ga.
Harrison, Verna	Early	Damascus, Ga.
Herring, Jack	Tift	Tifton, Ga.
Herring, Lois	Tift	Tifton, Ga.
Hester, Henry	Ben Hill	Fitzgerald, Ga.
Hill, Hugh	Wheeler	Alamo, Ga.
Hobgood, Loudine	Gordon	Curryville, Ga.
Hodges, Sara	Long	Ludowici, Ga.
Holden, Malcolm	Putnam	Eaton, Ga.
Hurst, Clayt	Tift	Tifton, Ga.
Ingram, David	Early	Arlington, Ga.
Ivey, Bernard	Macon	Oglethorpe, Ga.
Jacobs, Macie	Brantley	Nahunta, Ga.
Johns, Ernie Lee	Charlton	Winokur, Ga.
Johnson, B. L.	Berrien	Ray City, Ga.
Johnston, R. L.	Dade	Head River, Ga.
Jones, Mary	Tift	Tifton, Ga.
Jones, Frances	Glynn	Brunswick, Ga.
Jones, Grayson	Grady	Whigham, Ga.
Jones, Kent		McKenzie, Tenn.
Kelley, William		McKenzie, Tenn.
Kesler, Herman	Banks	Toccoa, Ga.
King, Irma	Worth	Doerun, Ga.

NAME	COUNTY	ADDRESS
Langston, William	Gordon	Resaca, Ga.
Leckie, Robert	Charlton	Folkston, Ga.
Lewis, Martha	Putnam	Eatonton, Ga.
Liggin, Samuel	Taylor	Reynolds, Ga.
Long, Edgar	Lee	Leesburg, Ga.
Loyd, Marvin	DeKalb	Chamblee, Ga.
Loyless, Bessie	Early	Blakely, Ga.
Mann, E. C.	Turner	Ashburn, Ga.
Manry, Evelyn	Laurens	Dublin, Ga.
Mansfield, Paul	Baker	Albany, Ga.
Marchant, Joe	Telfair	Milan, Ga.
Martin, Henry		Jacksonville, Fla.
Martin, Clenton		Jefferson, Ga.
McCants, Edward	Taylor	Butler, Ga.
McCord, Aldridge	Brooks	Morven, Ga.
McDaniel, Flossie	Tift	Tifton, Ga.
McGaughey, Paul	Walton	Monroe, Ga.
McLeskey, J. B.	Hart	Hartwell, Ga.
McMillan, Jeffrie	Atkinson	Willacoochee, Ga.
McNeill, Marvin	Sumter	Americus, Ga.
Mercer, Jack	Jones	Gray, Ga.
Milford, Payton	Hart	Hartwell, Ga.
Milford, Arthur	Hart	Hartwell, Ga.
Miller, Mary Emma	Grady	Cairo, Ga.
Miller, Leah	Stewart	Richland, Ga.
Miller, Candler	Bulloch	Portal, Ga.
Moore, Jack	Jones	Gray, Ga.
Moore, J. L.	DeKalb	Decatur, Ga.
Moore, Fred	Meriwether	Warm Springs, Ga.
Morgan, Harold	Dooly	Vienna, Ga.
Morgan, C. M.	Dooly	Vienna, Ga.
Newton, David	Colquitt	Norman Park, Ga.
Nichols, Ward	Wayne	Jesup, Ga.
Oglesbee, Roy	Burke	Girard, Ga.
Paulk, Maxwell	Atkinson	Willacoochee, Ga.
Paulk, T. J.	Atkinson	Willacoochee, Ga.
Perdue, Jack		Luverne, Ala.
Petty, Walter	Terrell	Dawson, Ga.
Petty, Pauline	Tift	Tifton, Ga.
Pettyjohn, Winnie Merle	Jackson	Talmo, Ga.
Poitevint, Hansel	Decatur	Camilla, Ga.
Poitevint, Kennette	Decatur	Camilla, Ga.
Prince, Madge	Early	Damascus, Ga.
Puckett, Virginia	Wayne	Jesup, Ga.
Pullen, William H.	Early	Damascus, Ga.
Ragan, W. J.	Lowndes	Valdosta, Ga.
Rainwater, Harrison	Tift	Tifton, Ga.
Rees, Samuel	Webster	Preston, Ga.
Roddenberry, Mattie	Jeff Davis	Hazlehurst, Ga.
Roddenberry, Oree	Charlton	Folkston, Ga.

NAME	COUNTY	ADDRESS
Rogers, Lester	Mitchell	Camilla, Ga.
Rogers, Vera	Tattnall	Glennville, Ga.
Ross, Leslie	Tift	Tifton, Ga.
Ross, Oren	Tift	Tifton, Ga.
Ross, Frank	Tift	Tifton, Ga.
Rushing, W. C.	Lanier	Stockton, Ga.
Sanders, Edna	Terrell	Dawson, Ga.
Seckinger, A. L.	Effingham	Clyo, Ga.
Simpson, Dan	Worth	Warwick, Ga.
Scarboro, Wilbur	Berrien	Nashville, Ga.
Smith, Armor	Dodge	Eastman, Ga.
Smith, Chandler	Lanier	Stockton, Ga.
Spence, Marjorie	Early	Blakely, Ga.
Spooner, Em Ellen	Seminole	Donaldsonville, Ga.
Stafford, Timothy	Evans	Claxton, Ga.
Stafford, J. R.	Evans	Claxton, Ga.
Stewart, Kimsey	Turner	Ashburn, Ga.
Stewart, John Thomas	Crisp	Cordele, Ga.
Studstill, Jonathan	Lowndes	Valdosta, Ga.
Sutton, Mildred	Tift	Tifton, Ga.
Swilling, Frank		Langdale, Ala.
Temples, George	Candler	Register, Ga.
Thomas, Kenneth	Decatur	Attapulgus, Ga.
Thompson, Myrtie	Clay	Bluffton, Ga.
Tison, Louie	Lee	DeSoto, Ga.
Tison, Henry Grady	Lee	DeSoto, Ga.
Tootle, Jettie	Tattnall	Glennville, Ga.
Turner, Price	Colquitt	Coolidge, Ga.
Tye, Mary	Calhoun	Edison, Ga.
Vance, Aubrey	Turner	Sycamore, Ga.
VanLandingham, W. E.	Grady	Cairo, Ga.
Vickers, James	Johnson	Wrightsville, Ga.
Walker, Jerry	Dodge	Milan, Ga.
Ward, Marvin	Crisp	Cordele, Ga.
Weaver, Oscar	Butts	Jackson, Ga.
Weaver, George	Gordon	Calhoun, Ga.
White, Wiley	Worth	Sylvester, Ga.
Wickham, John	Colquitt	Moultrie, Ga.
Wilkes, Edith	Telfair	Lumber City, Ga.
Williams, Roger	Bulloch	Brooklet, Ga.
Williams, Eugene	Decatur	Attapulgus, Ga.
Wilson, Edna Earle	Seminole	Donaldsonville, Ga.
Wood, Ralph	Peach	Ft. Valley, Ga.
Young, Gordon	Worth	Sumner, Ga.
Zorn, James	Turner	Ashburn, Ga.

This year, students from 70 Georgia counties and six states have enrolled at Abraham Baldwin Agricultural College.

## ADMINISTRATIVE OFFICERS

Marion Smith, Chairman, Board of Regents  
L. R. Siebert, Secretary, Board of Regents

Steadman Vincent Sanford, A.B., Litt.D., LL.D. .... Chancellor  
George H. King, B.S., M.S. .... President  
George P. Donaldson, B.S., M.S. .... Dean  
Claude Gray, A.B., LL.D. .... Registrar

"The farmers are the founders of civilization."  
—Daniel Webster





*“A Wholesome and Satisfying  
Life on the Soil”*